

{TESS+} VHF Training

Module 4: Technical site assessment

Read more about {TESS+}: www.wfp.org/telecommunications-security-standards

Email: TESS@wfp.org



Session objectives

- Repeater site assessment
- Radio coverage and prediction maps

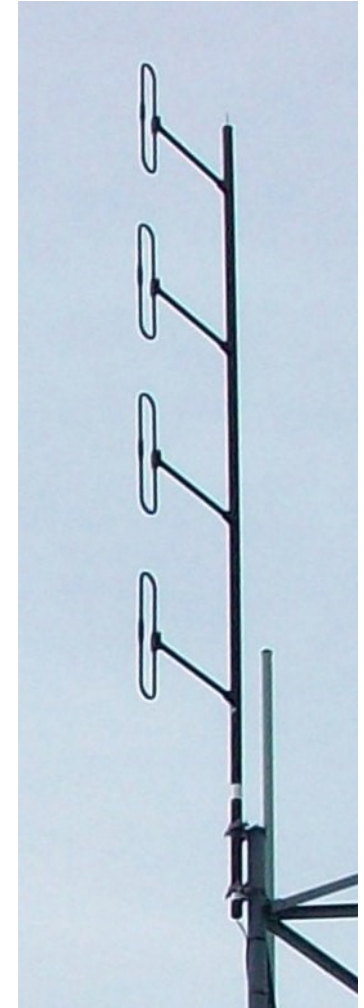
Repeater site selection

- Conducting a radio coverage site survey and finding the right installation location is one of the most important steps in setting up a repeater.
- Positioning the antenna is critical to the overall success of the radio network.
- Finding the best spot will maximise your radio network coverage.



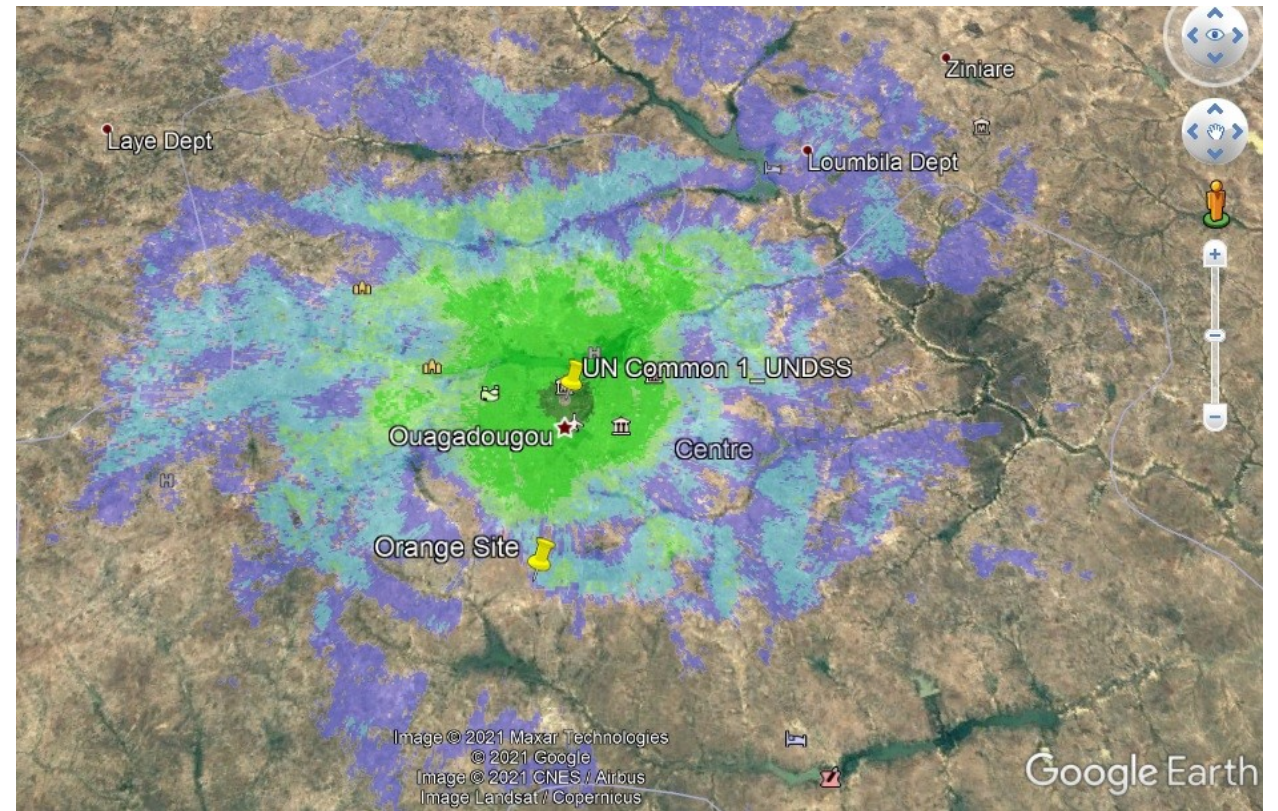
Repeater site assessment - considerations

- Site / access / safety
- Power
- Grounding
- Lightning arrestor
- Location / elevation / line of sight
- Interference



VHF radio coverage & prediction mapping

- *RadioMobile* is a free software that predicts radio coverage based on input values that you enter.
- VHF radio coverage prediction based on:
 - Handheld use
 - Mobile/base use
 - Repeater use



Student resources

- Radio Mobile software files

Questions and remarks

